



— PRODUCT DATA SHEET

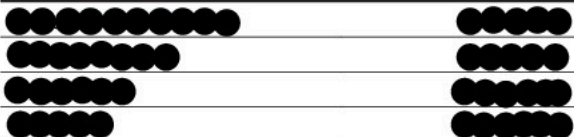
P7



P7

SPECIFICATIONS

TIMELINE



TECHNICAL DATA

Length defocused [mm]	130
Length focused [mm]	140
Head diameter [mm]	37
Tube diameter [mm]	30
Weight incl. batteries [g]	175
Weight without batteries [g]	130
Focus function	Yes
Head material	Aluminum alloy
Tube material	Aluminum alloy
Optic	Plastic lense (PMMA)
Cartridge	Yes

POWER SUPPLY

Power source type	Battery
Battery quantity	4
Battery type	Alkaline
Battery description	Micro (AAA) 1.5V
Rechargeable	No
Energy modes	Energy Saving
Usable batteries	AAA NiMH 1.2V

FURTHER SPECIFICATIONS

IP class	IPX4
Drop test (drop height) [m]	1
Working temperature range [°C]	-20 to +40

LIGHT FUNCTIONS

Low Power, Mid Power, Power

LIGHT SOURCE

Amount LEDs	1
LED type	High Power LED
Color	White
Color temperature [K]	6000 to 8000
Color rendering index (CRI)	70

LIGHT VALUES

	Boost	Power	Mid Power	Low Power
Light output ¹ [lm]		450	250	40
Beam distance ¹ [m]		300	220	100
Run time ¹ [h]		1	2	25

SWITCH

End Cap Switch

TECHNOLOGIES

Advanced Focus System³, Rapid Focus

7
YEAR
WARRANTY⁴