

**Ordering number C12041_EVA-S**

Family	Eva	FWHM	13 degrees
Type	Lens	Efficiency	94 %
LED	XM-L	cd/Im	-
Color	Clear	Gerber File	Available
Diameter	35 mm		
Height	16.4 mm		
Style	Round		
Optic Material	PMMA		
Holder Material	-		
Fastening	-		
Status	On production		

Outer flange can be secured in fixture for hardware-free attachment

**Ordering number C10684_EVA-D**

Family	Eva	FWHM	16 degrees
Type	Lens	Efficiency	91 %
LED	XM-L	cd/Im	-
Color	Clear	Gerber File	Available
Diameter	35 mm		
Height	16.4 mm		
Style	Round		
Optic Material	PMMA		
Holder Material	-		
Fastening	-		
Status	On production		

Outer flange can be secured in fixture for hardware-free attachment

**Ordering number C10685_EVA-M**

Family	Eva	FWHM	24 degrees
Type	Lens	Efficiency	88 %
LED	XM-L	cd/Im	-
Color	Clear	Gerber File	Available
Diameter	35 mm		
Height	16.4 mm		
Style	Round		
Optic Material	PMMA		
Holder Material	-		
Fastening	-		
Status	On production		

Outer flange can be secured in fixture for hardware-free attachment

**Ordering number C10686_EVA-W**

Family	Eva	FWHM	40 degrees
Type	Lens	Efficiency	79 %
LED	XM-L	cd/Im	-
Color	Clear	Gerber File	Available
Diameter	35 mm		
Height	16.4 mm		
Style	Round		
Optic Material	PMMA		
Holder Material	-		
Fastening	-		
Status	On production		

Outer flange can be secured in fixture for hardware-free attachment

**Ordering number** C10909_EVA-WW

Family	Eva	FWHM	64 degrees
Type	Lens	Efficiency	77 %
LED	XM-L	cd/Im	-
Color	Clear	Gerber File	Available
Diameter	35 mm		
Height	16.4 mm		
Style	Round		
Optic Material	PMMA		
Holder Material	-		
Fastening	-		
Status	On production		

Outer flange can be secured in fixture for hardware-free attachment

NOTE: The typical divergence will be changed by different color, chip size and chip position tolerance. The typical total divergence is the full angle measured where the luminous intensity is half of the peak value.



PRODUCT DATASHEET

Eva series

last update 1/3/2013

GENERAL INFORMATION

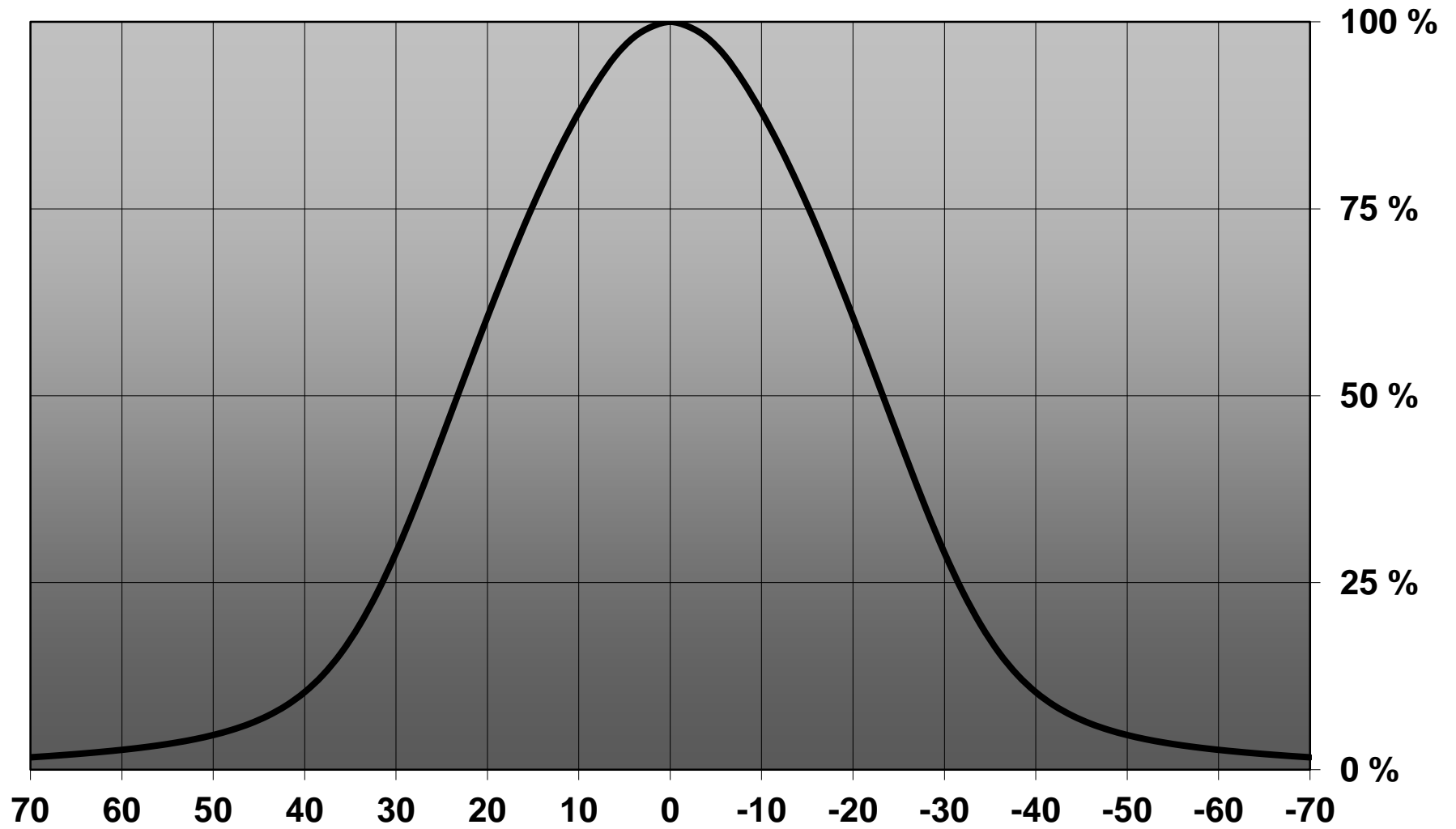
- Product series especially designed & optimized for XM-L series of LEDs.
- Special care taken to make light distribution as uniform as possible.
- Lens material optical grade PMMA with high UV and temperature resistance. Allows use of high current and temperature conditions.

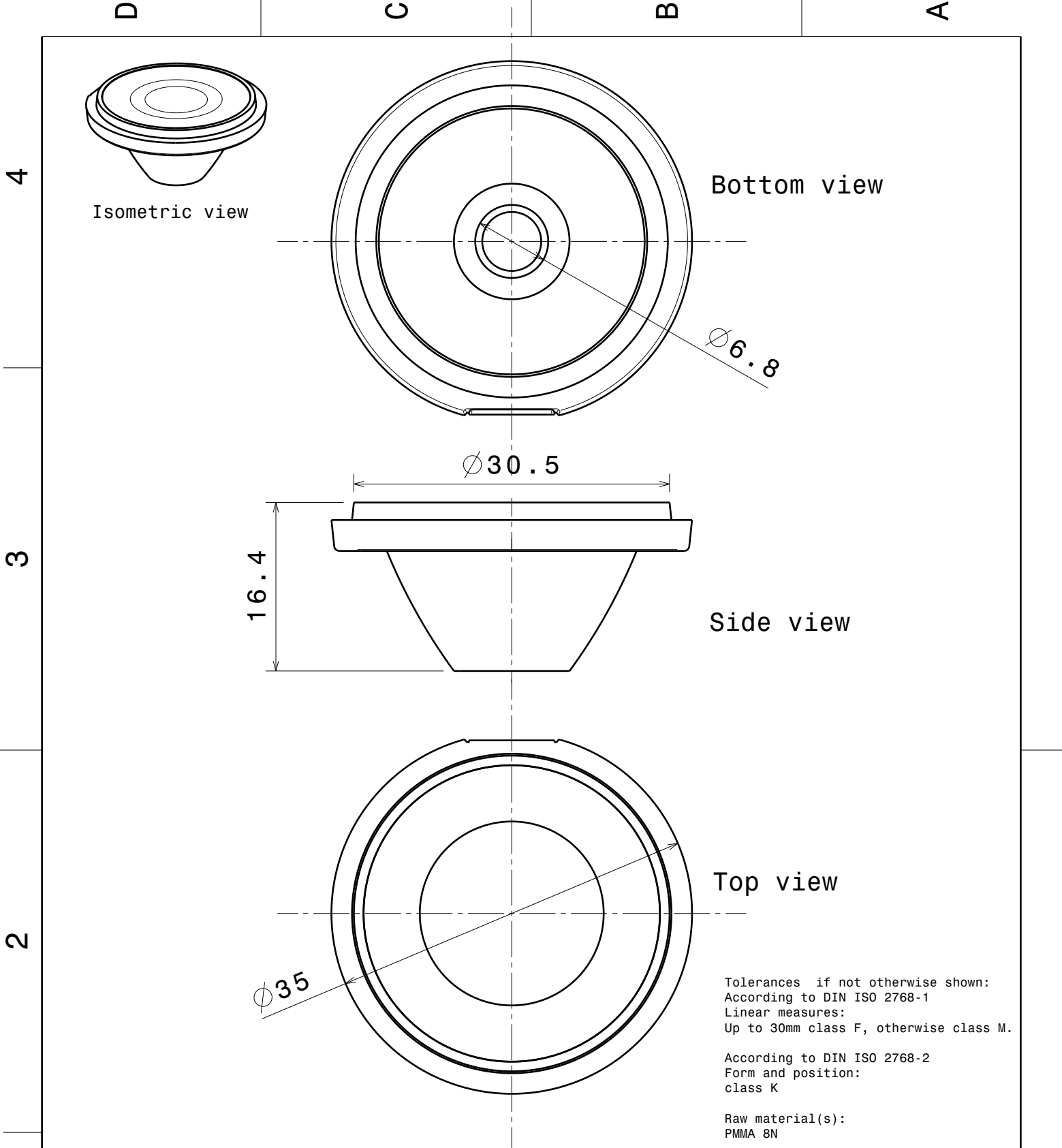
Please find more information about used material from below:


http://ledil.fi/sites/default/files/Documents/Technical/Material/PMMA%20N%20UL94_Yellow%20Card.pdf

<http://ledil.fi/sites/default/files/Documents/Technical/Material/PMMA%20N%20PLEXIGLAS-Datasheet.pdf>

Relative Intensity of C10909_Eva-MC-WW





This drawing is our property. It can't be reproduced or communicated without our written agreement.		 LEDiL A WORLD OF INNOVATION		Ledil Oy Salorankatu 10 24100 SALO Finland	
DRAWN BY ah		DATE 1.3.2013		DRAWING TITLE Datasheet Eva Spot Lens	
CHECKED BY		DATE		SIZE A4	DRAWING NUMBER C12041
DESIGNED BY HH		DATE 26.08.2008		SCALE 2:1	WEIGHT (g)
				SHEET 1 / 1	