

# FLS-PP Ip

## Data sheet

- ZigBee Light Link certified ballast for RGB / W light control
- operation with mobile devices via the RaspBee gateway or wireless switches of dresden elektronik possible
- with gateways from Philips (Hue Bridge) and OSRAM (Lightify) compatible
- for LED strips with common anode



### Technical Data



#### Electrical specifications

Input	12 / 24 V DC
Output	PWM sum current $\leq 6$ A, Switch-off at limit value exceeded
Standby energy consumption	$< 0.35$ W
Frequency range	2.4 GHz
Radio standard	IEEE 802.15.4



#### Environmental information

Storage temperature	-20 °C - 55 °C
Operating temperature	-20 °C - 55 °C



#### Compatibility

Protocol	ZigBee
Profile	ZigBee Light Link

### Particular markers

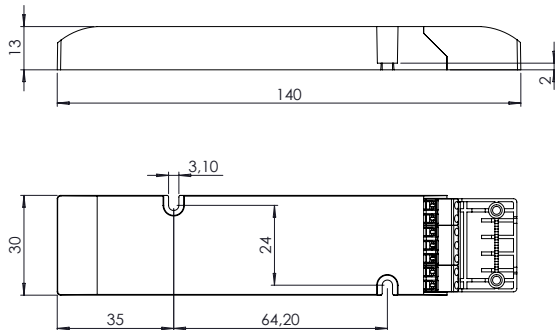


## Further information

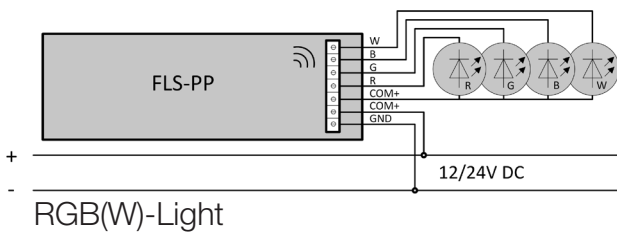
This product contains FCC-ID: XWV-MEGA23M12.

Hereby, dresden elektronik ingenieurtechnik gmbh declares that the radio equipment type FLS-PP Ip is in compliance with directive 2014/53/EU. The full text of the EU declaration of conformity is available at the following internet address: [www.dresden-elektronik.de](http://www.dresden-elektronik.de)

## Dimensions in mm

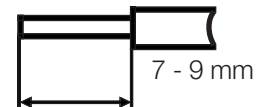


## Connection diagram



## Wire cross-section

wire preparation  
0.2 - 0.75 □



## Warranty

This product is quality-tested and provided with the statutory warranty period of 24 months from the date of purchase. Please keep the invoice as proof of purchase.